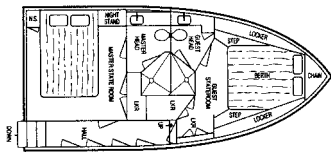
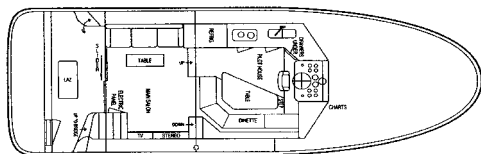


Navigator 42 Classic

1996-2000



The Navigator 42 Classic ranks among the smaller pilothouse yachts built in recent years. She rides on the same solid fiberglass hull used in the production of several other Navigator models, and her 15-foot beam—wide for a 42-footer—makes for a surprisingly spacious interior. Entering through the sliding glass door from the cockpit into the bi-level salon, a convertible settee is to port and storage cabinets with TV to the right. Forward and up two steps is the dining table, galley, and lower helm station. Instead of accessing the lower staterooms from the pilothouse, in the 42 Classic owners and guests reach the sleeping quarters from a companionway to starboard in the salon. The guest stateroom with island double berth is forward, and the master stateroom with walkaround queen is amidships. Both have private en-suite heads with separate stall showers. Interestingly, neither head can be reached without first entering one of the staterooms—a minor inconvenience. Visibility from the centerline helm is excellent. Molded steps in the cockpit provide easy access to the flybridge. Volvo 318hp diesels cruise at 20 knots (mid 20s top).

Specifications

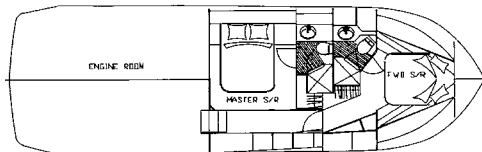
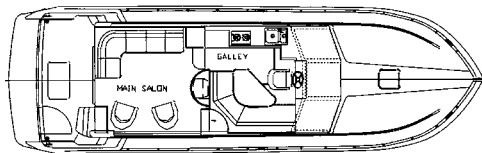
Length Overall.....	42'0"	Fuel.....	400 gals.
Beam.....	15'0"	Water.....	130 gals.
Draft.....	4'4"	Waste.....	40 gals.
Weight.....	30,000#	Hull Type.....	Modified-V
Clearance.....	NA	Deadrise Aft.....	15°

Navigator 44 Classic

2002-07



A stretched version of the Navigator's earlier 42 Classic (1996-2000), the 44 Classic achieved wide popularity during her production years thanks to her classic pilothouse lines, spacious accommodations, and competitive pricing. Like all Navigators of her era, the 44 Classic is heavily built on a solid fiberglass hull with a wide 15-foot beam. Entering through the sliding glass door from the cockpit into the expansive main salon, an L-shaped settee is to port and two swivel chairs are opposite to starboard. Forward and up two steps is the dining table, galley, and lower helm station. Instead of accessing the staterooms from the pilothouse, a corridor to starboard in the salon leads to the staterooms, both of which have double berths and private en-suite heads. The interior is fully carpeted and highlighted with cherry cabinets and trim, vinyl overheads, and Corian counters. The side decks on the 44 Classic are nearly a foot wide, so movement around the boat is easy and safe. Unlike many pilothouse designs, there is no deck access door at the lower helm. No racehorse, Volvo 318hp diesels will cruise the 44 Classic at 18 knots (low 20s top).

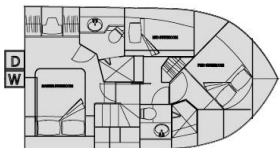
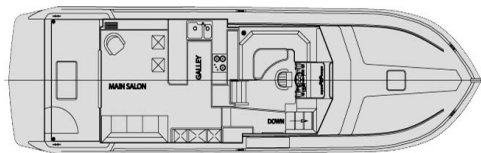


Specifications

Length.....	44'0"	Headroom.....	6'5"
Beam.....	15'0"	Fuel.....	500 gals.
Draft.....	4'5"	Water.....	130 gals.
Weight.....	34,500#	Waste.....	70 gals.
Clearance.....	19'3"	Hull Type.....	Modified-V

Navigator 4800 Classic

1997-2010



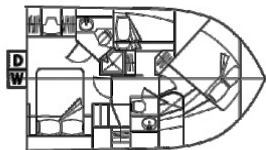
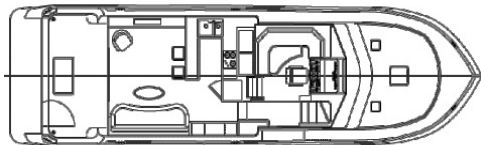
Navigator's most successful model, the 4800 Classic was introduced in 1997 as a competitively priced pilothouse yacht with the comforts and features of boats costing many thousands more. Although a two-stateroom, two-head interior was standard, it appears that most owners chose the optional three-stateroom layout with over/under bunks in the second guest cabin. Stepping inside from the cockpit, the 4800's full beam salon is tastefully finished with rich cherrywood cabinets and trim. A large sofa is to starboard with a barrel chair to port and two bar stools forward at the bar. A home-size galley is forward with full size refrigerator and tons of storage. Up two steps is the U-shaped dinette and lower helm station with sliding deck access door to starboard. Companionway steps lead from the pilothouse down to the staterooms—the full beam master is aft, VIP is forward, and the bunk cabin is to port. Both guest cabins share a head with stall shower. The engineroom is reached via a cockpit hatch. Note that the 4800's styling was updated in 2009 with softer lines and new hullside windows. Twin 370hp Volvo diesels cruise at 15–16 knots.

Specifications

Length Overall.....	49'2"	Fuel.....	500 gals.
Beam.....	15'0"	Water.....	130 gals.
Draft.....	4'5"	Waste.....	70 gals.
Weight.....	44,000#	Hull Type.....	Modified-V
Clearance.....	NA	Deadrise Aft.....	14°

Navigator 5100 Pilothouse

2006-12



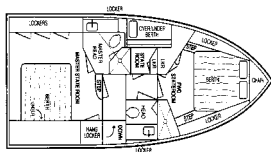
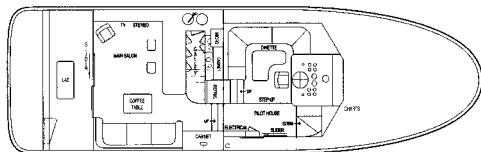
The Navigator 5100 Pilothouse is an enlarged version of the Navigator 4800 Classic with the extra length used to create more spacious salon and cockpit dimensions. Built on the same solid fiberglass hull with a 15-foot beam, the three-stateroom interior of the Navigator 5100 is highlighted by a spacious main salon with Bose surround sound entertainment system, leather sofa to starboard, lounge chair with ottoman opposite, and two bar stools at the bar. Forward in the salon is the U-shaped galley with full size refrigerator, Corian countertops, dishwasher, and utility space below the galley floor. Up three steps to the pilothouse level is the dinette center helm station with sliding deck door to starboard. Companionway steps lead from the pilothouse down to the staterooms—the full beam master is aft, VIP double is forward, and the bunk cabin is to port. Both guest cabins share a head with stall shower. The engineroom is reached via a cockpit hatch. Note that the 5100's styling was updated in 2009 with softer lines and new hullside windows. Volvo 500hp diesels cruise the 5100 Pilothouse at 18 knots (low 20s top).

Specifications

Length.....	51'8"	Fuel	600 gals.
Beam.....	15'0"	Water	170 gals.
Draft.....	4'6"	Waste.....	70 gals.
Weight.....	50,000#	Hull Type	Modified-V
Clearance	16'9"	Deadrise Aft	14°

Navigator 53 Classic

1996-2006



Navigator had a winning design with the 53 Classic, a good-looking pilothouse yacht whose traditional lines and competitive price hit the sweet spot with buyers. Built on a solid fiberglass hull with an integral swim platform, the Navigator's 15-foot beam is slender for a motoryacht this size. Her pilothouse interior includes a comfortable salon with a long sofa to starboard, barrel chair to port, and two stools at the bar. The U-shaped galley is forward and open to the salon. Up two steps to the helm level is the U-shaped dining area and steps to the flybridge. The staterooms are accessed down a stairway forward to starboard of the helm. The master stateroom with walkaround queen bed is amidships. The VIP stateroom with queen berth is forward, and the guest stateroom with upper/lower bunks is to port. Both heads have separate stall showers. The Navigator's large cockpit includes lazarette storage and a transom door. Note that the flybridge cannot be accessed from the cockpit. Topside, wraparound lounge seating aft of the helm will seat a small crowd. Optional 430hp Volvo diesels cruise the Navigator 53 Classic at 18 knots (low 20s top).

Specifications

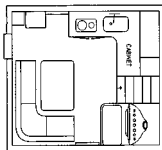
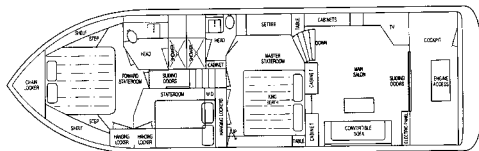
Length Overall.....	53'0"	Fuel.....	600 gals.
Beam.....	15'0"	Water.....	170 gals.
Draft.....	4'6"	Waste.....	70 gals.
Weight.....	42,500#	Hull Type.....	Modified-V
Headroom.....	6'6"	Deadrise Aft.....	15°

Navigator Sundance 5300

1993-99



Introduced in 1993, the Sundance 5300 is a mid-tier pilothouse yacht with distinctive lines and comfortable accommodations. The interior layout differs from later Navigator interiors in that the galley is on the pilothouse level rather than forward in the salon. This, together with the fact that there are no side decks, results in a surprisingly spacious salon in spite of the 5300's relatively narrow beam. For privacy, the master stateroom is accessed directly from the salon (rather than from the forward companionway), and because there is no pilothouse bulkhead the helmsman has a good view aft. A dinette is opposite the galley in the wheelhouse, and a nearby ladder leads up to the bi-level flybridge with its wraparound guest seating and dinghy storage area aft. Additional features include two pilothouse deck doors, a well-arranged engine room (accessed from a cockpit hatch), transom door, a shaded cockpit and large cabin windows in the salon. Notably, there is no flybridge access from the cockpit. Volvo 380hp diesels cruise the Navigator 5300 at 16-18 knots and reach a top speed of about 20 knots.

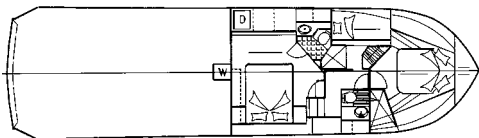
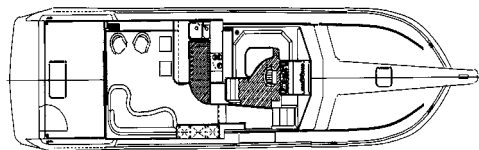


Specifications

Length Overall.....	53'0"	Fuel.....	600 gals.
Beam.....	15'0"	Water.....	200 gals.
Draft.....	4'6"	Waste.....	70 gals.
Weight.....	43,000#	Hull Type.....	Modified-V
Headroom.....	6'6"	Deadrise Aft.....	15°

Navigator 56 Classic

1999-2005



Navigator prospered in recent years by delivering capable—if basic—yachts at prices well below the competition. The 56 Classic followed in that tradition, a graceful pilothouse yacht with traditional lines and comfortable three-stateroom interior. A stretched version of the top-selling 53 Classic, the 56 Classic is built on solid fiberglass hull with an integrated swim platform. A 15-foot beam is narrow for a boat this size, so no one would describe the accommodations of the 56 Classic as spacious. The pilothouse layout includes a comfortable salon with a long sofa to starboard, barrel chair to port, and two stools at the bar. The U-shaped galley is forward and open to the salon. Up two steps to the helm level is the U-shaped dining area and steps to the flybridge. The staterooms are accessed down a stairway forward to starboard of the helm. The master stateroom with walkaround queen bed is amidships. The VIP stateroom with queen berth is forward, and the guest stateroom with upper/lower bunks is to port. Both heads have separate stall showers. The Navigator's large cockpit includes lazarette storage and a transom door, but no flybridge access. Volvo 430hp diesels cruise at 17–18 knots (low 20s top).

Specifications

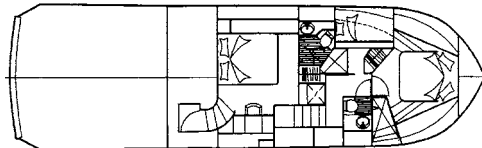
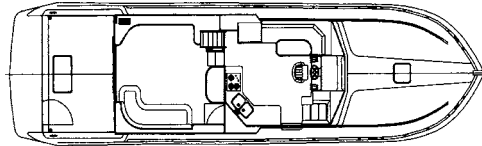
Length Overall.....	56'0"	Fuel.....	600 gals.
Beam.....	15'0"	Water.....	170 gals.
Draft.....	4'6"	Waste.....	40 gals.
Weight.....	45,500	Hull Type.....	Modified-V
Clearance.....	NA	Deadrise Aft.....	15°

Navigator 57 Rival

2002-07



A handsome yacht with traditional pilothouse lines, the large cockpit of the Navigator 57 Rival distinguishes her from her sisterships in the Navigator fleet. She's built on a solid fiberglass hull with a long keel, and the slender 15-foot beam of the 57 Rival is notable in a boat this size. Accommodations include three staterooms on the lower level including a full beam master suite with private salon access. The forward VIP stateroom has an island queen berth, and the second guest cabin to port has over/under bunks. Both guest staterooms share a common head with walk-in shower. An L-shaped sofa is starboard in the Rival's full beam salon with its large windows, high-gloss cherrywood cabinets, and built-in Bose entertainment system. Up three steps, the pilothouse combines the galley, dining area, and lower helm position. With nearly 100 square feet of space, the Rival's cockpit is large enough to entertain a small crowd. A dingy lift was standard on the flybridge. Note the frameless windows and starboard side pilothouse door. Twin 370hp Volvo diesels cruise at a leisurely 16-17 knots. Optional 480hp Volvos cruise at close to 20 knots.



Specifications

Length.....	57'0"	Fuel	750 gals.
Beam.....	15'0"	Water	200 gals.
Draft.....	4'7"	Waste.....	75 gals.
Weight.....	47,500#	Hull Type	Modified-V
Headroom	6'5"	Deadrise Aft	15°